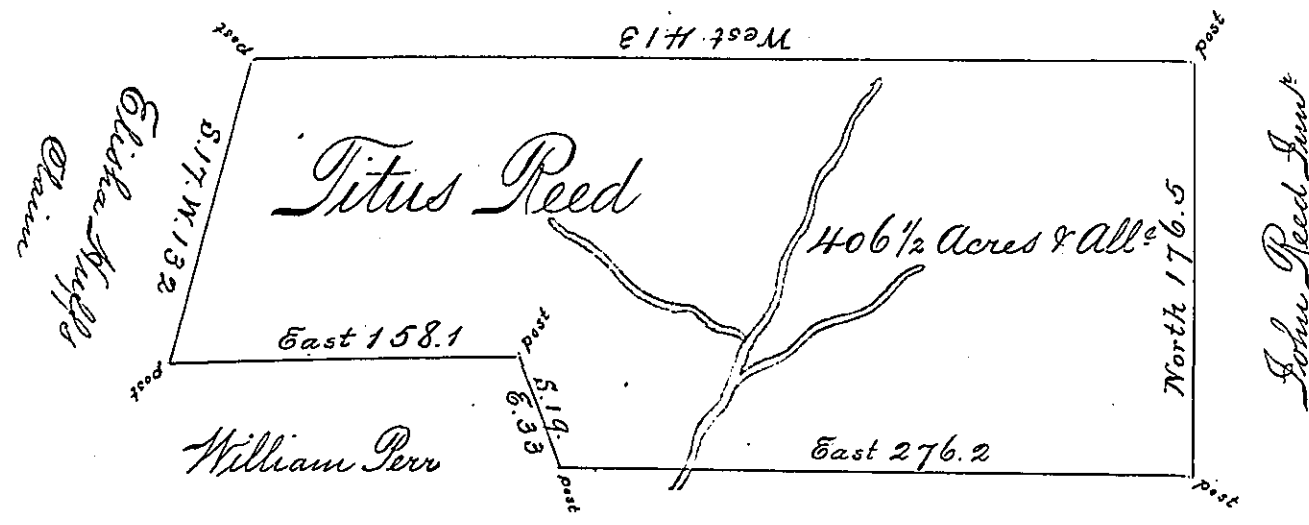


© 190-223

William Reed



Timothy Reed
Pg 251

Situated on the Waters of Fifteen Mile Creek
 Colerain Township Redford County contain-
 ing 406 1/2 Acres with the usual allowance
 of six p Cent for Roads &c^a Surveyed for
 Titus Reed the 8th day of October 1794 On
 Warrant dated the 21st day of February
 1794.

George Woods Junr D.S.

To Daniel Brodhead Esq S.S.

Examined by me Dec^r 16th 1808.

John Anderson

To Samuel Cochran Esq
Surveyor General

Deputy Surveyor

IN TESTIMONY that the above is a copy of the original remaining on file in the
 Department of Internal Affairs of Pennsylvania, made con-
 formably to an Act of Assembly approved the 16th day of
 February, 1833. I have hereunto set my Hand and caused
 the Seal of said Department to be affixed at Harrisburg, this
 sixth day of October 1896.

James Watta
 Secretary of Internal Affairs.